

CULTIVATING CONNECTICUT

Connecticut
Resource
Conservation &
Development Area

**“Connecticut’s Market
Place for Community
Solutions”...**

George Krivda, USDA



Air Line Trail

MASTER PLAN CONCEPT

MEETING GOAL

- CONCURRENCE AND SUPPORT FROM CTDEEP (PROPERTY OWNER) TO COLLABORATE WITH A 12 TOWN TASK FORCE (TO BE FORMED) TOWARD DEVELOPMENT OF A MASTER PLAN FOR THE AIR LINE TRAIL



TRAIL ACCESS INFORMATION

Babbitt Hill Road to west side Covell Road

Air Line State Park Trail

Length **0.5** mi (0.8 km)

Elev Gain **54.2** ft (16.53 m)

Elev Loss **14.1** ft (4.29 m)

Hiking

Biking

Horseback Riding

No Motorized Vehicles

Grade

Typical Grade **2.7%**

88% (2224 ft) of trail is **<5%**

5.9% (149 ft) of trail is **10% to 18%**

ADA Maximum Ramp Grade **8.3%**

Cross Slope

Typical Cross Slope **1.7%**

77% (1920 ft) of trail is **<3%**

12% (306 ft) of trail is **4% to 16.9%**

Tread Width

Typical **120** in

Minimum **0.3%** (76 ft) **39** in

TRAIL AROUND ACCESS GATE
AT COVELL ROAD **24** in

Surface

Surface Type **Stone Dust**

96.5% (2419 ft) of trail is **Hard**

2.4% (60 ft) of trail is **Soft**

Obstructions

ACCESS GATE AT COVELL ROAD

is locked and footpath is 24 in. right

east gate and 48 in. left of west gate.

WARNING: Trail conditions may have

changed since September 2017 when this

trail was assessed. Temporary obstacles

were not mapped.

Funded by:
theLastGreenValley.org
DEEP Rec Trails Program

The Air Line Trail Becomes A Reality

In 1996, DEEP proposed the rehabilitation of the railbed as a multipurpose trail and linear state park.

1998 National and State Rec Trails Program Funding - Towns working with enthusiastic volunteers obtained funds and began working

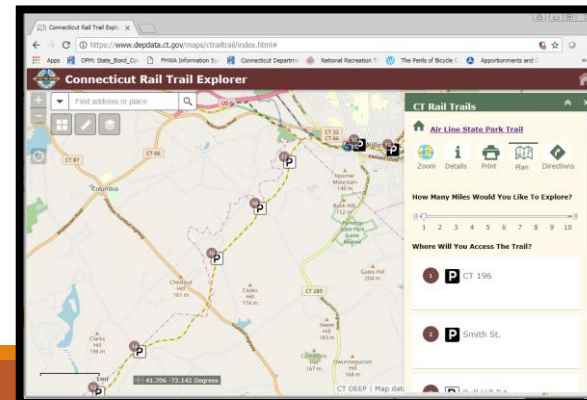
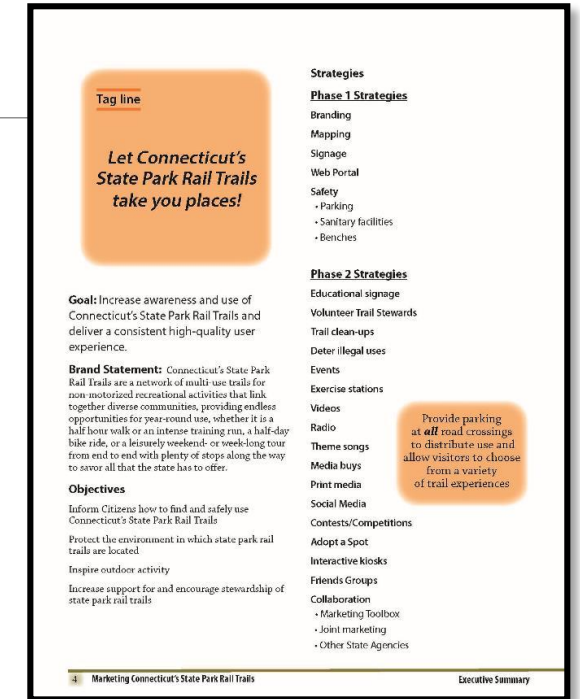
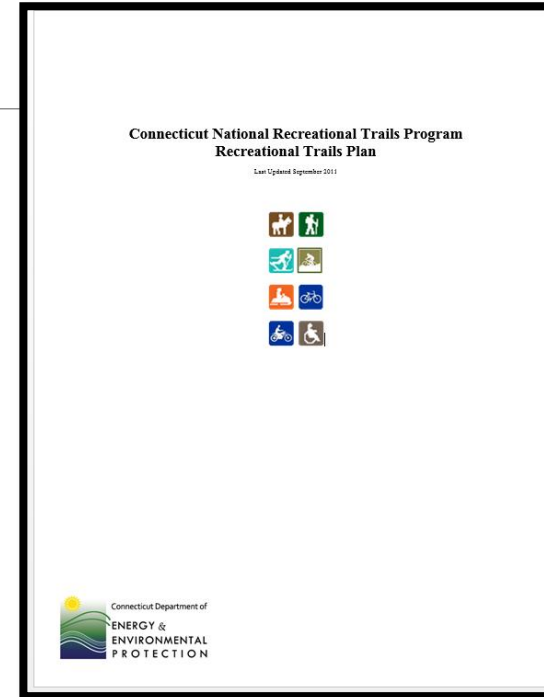
- 2002 Hebron signage and Lebanon East Hampton, Colchester, worked together to link their sections;
- 2006 Thompson restoration
- 2007 Colchester, East Hampton restoration
- 2008 Windham with Willimantic White Water Partnership; 2009 Hebron-Colchester spur;
- 2010 Chaplin Renovation of 3.5 miles of Airline Trail in Chaplin completing the connection between Windham and Hampton;
- 2014 Pomfret & CT Audubon develop logo and Station
- 2015 Portland in big project;
- 2016-17 The Last Green Valley Utilizing the upgraded High Efficiency Trail Assessment Process.



The Air Line Trail Becomes A Reality

DEEP State Parks Projects:

- State Trail Plan document
- Air Line Trail Design Guidance
- Marketing plan
- CT Rail Trail Explorer



The Air Line Trail Becomes A Reality



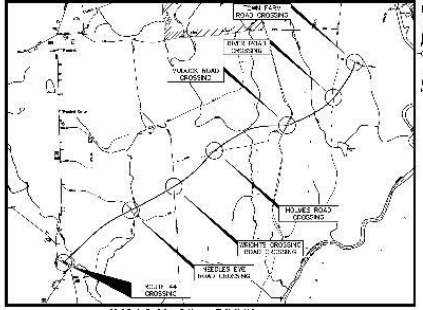
DOT Projects

Restoration Project DOT provided just over 1 million of Federal and State funding. Surfacing, drainage, bridges, signage, some parking improvements.

The Air Line Trail Becomes A Reality

DOT Projects

In collaboration with USDA, Putnam-Pomfret sewer line extension and trail restoration.

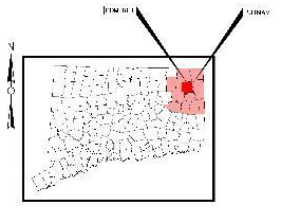


SCALE: 1" = 2000'

TOWNS OF POMFRET AND PUTNAM, CT


AIR LINE NORTH STATE PARK TRAIL PEDESTRIAN TRAIL CROSSINGS

STATE PROJECT NO. 111-124
FEDERAL AID PROJECT NO. TBD




NOT TO SCALE

CONTENTS		
SHEET NO.	SHEET NAME	SHEET TITLE
1	COVER	TITLE
2	EST-1	DETAILED ESTIMATE SHEET
3	IS-1	DORING LOGS
4	DET-1	DETAILS
5	HWY-1	WRIGHTS CROSSING ROAD AND TOWN FARM ROAD PAVEMENT MARKING AND SIGNING PLAN
6	S-1	ROUTE 44 - GENERAL NOTES, PLAN AND ELEVATION
7	S-2	ROUTE 44 - PROFILES AND PREFAB. BRIDGE DETAILS
8	S-3	ROUTE 44 - FOUNDATION PLAN
9	S-4	ROUTE 44 - DEVELOPED ELEVATIONS
10	S-5	ROUTE 44 - CONCRETE BRIDGE SLAT DETAILS
11	S-6	ROUTE 44 - SUBSTRUCTURE DETAILS
12	S-7	ROUTE 44 - DECORATIVE SIGNING DETAILS
13	S-8	NEEDLES EYE - GENERAL NOTES, PLAN AND ELEVATION
14	S-9	NEEDLES EYE - PROFILES AND PREFAB. BRIDGE DETAILS
15	S-10	NEEDLES EYE - FOUNDATION PLAN
16	S-11	NEEDLES EYE - DEVELOPED ELEVATIONS
17	S-12	NEEDLES EYE - BRIDGE SLAT DETAILS
18	S-13	NEEDLES EYE - SUBSTRUCTURE DETAILS
19	S-14	HOLMES ROAD - GENERAL NOTES, PLAN AND ELEVATION
20	S-15	HOLMES ROAD - PROFILES AND SECTIONS
21	S-16	HOLMES ROAD - FOUNDATION PLAN
22	S-17	HOLMES ROAD - DEVELOPED ELEVATIONS
23	S-18	MODOCK ROAD - GENERAL NOTES, PLAN AND ELEVATION
24	S-19	MODOCK ROAD - PROFILES AND SECTIONS
25	S-20	MODOCK ROAD - FOUNDATION PLAN
26	S-21	MODOCK ROAD - DEVELOPED ELEVATIONS
27	S-22	RIVER ROAD - GENERAL NOTES, PLAN AND ELEVATION
28	S-23	RIVER ROAD - PROFILES AND SECTIONS
29	S-24	RIVER ROAD - FOUNDATION PLAN
30	S-25	RIVER ROAD - DEVELOPED ELEVATIONS
31	S-26	UNDERGROUND CROSSINGS - WALL ALTERNATE SECTIONS



MAUREEN A. NICHOLSON
FIRST SELECTMAN



ROY SIMMONS
FIRST SELECTMAN

CONSTRUCTION SPECIFICATIONS:
CONNECTICUT DEPARTMENT OF
TRANSPORTATION, STANDARD
SPECIFICATIONS FOR ROADS,
BRIDGES, FACILITIES, AND
INCIDENTAL CONSTRUCTION, FORM
817, DATED 2016; SUPPLEMENTAL
SPECIFICATIONS DATED JULY 2018;
AND SPECIAL PROVISIONS

SURVEY INFORMATION DERIVED
FROM:
KWP ASSOCIATES

VERTICAL DATUM - NAVD88
HORIZONTAL DATUM - NAD83

DESIGNED BY:
WESTON & SAMPSON
273 DIVIDEND ROAD
ROCKY HILL, CT 06067

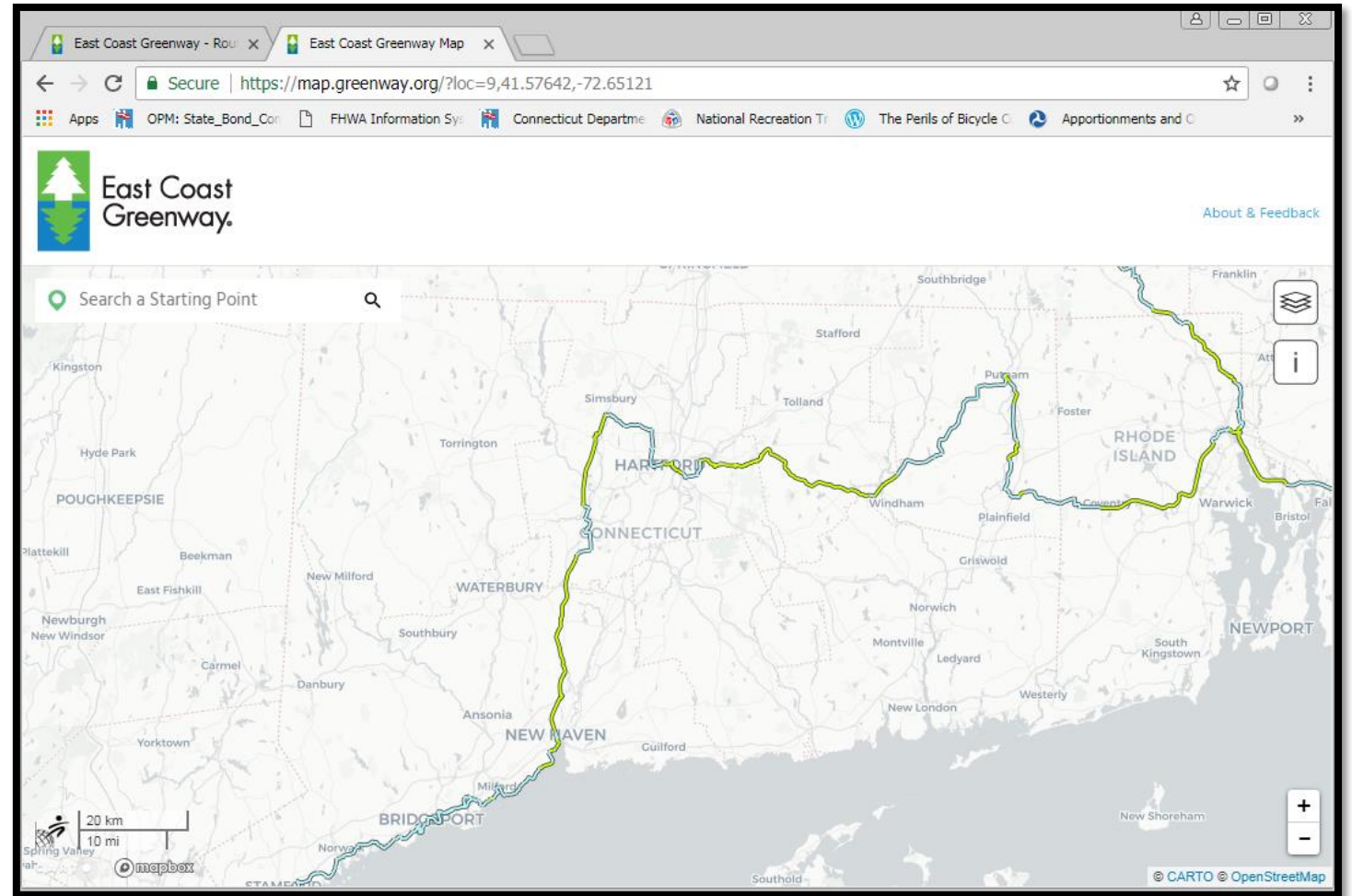
15495
CT. LIC. NO.
FEBRUARY 2019

Weston & SampsonSM

The Air Line Trail Becomes A Reality

If you build it....

ECG from Willimantic to Putnam is
planned for designation.

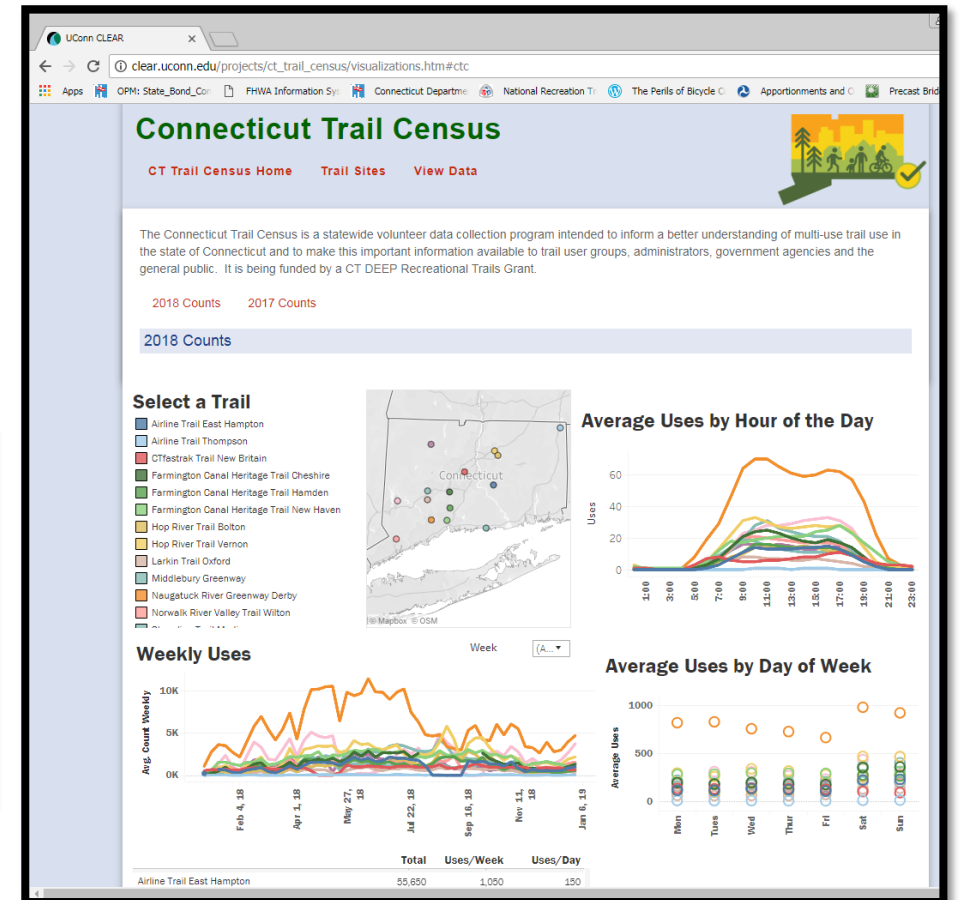


The Air Line Trail Becomes A Reality

If you build it....

Significant and surprising number of users are being counted!

	Total	Uses/Week	Uses/Day
Airline Trail East Hampton	55,650	1,050	150
Middlebury Greenway	48,033	906	129
CTfastrak Trail New Britain	44,265	835	119
Larkin Trail Oxford	29,633	559	80
Airline Trail Thompson	0,000	0	0



The Air Line Trail – The Future Looks Bright!

Nationally: KATY Trail State Park in Missouri; Erie Canal Trail
 In Connecticut: Multi-Town brochure and signage

The Air Line Trail

A Comedic/Greenway, State Linear Park and Multi-purpose Trail for non-motorists/duers

East Hampton

1) BELL TOWN VILLAGE CENTER & LAKE POCOTPAUG
 East Hampton is called "Bell Town" as it was the center of the bell making industry for the country. Taking a detour off the Trail at Cranberry Meadow onto Smith St. and traveling west leads to the Bell Town Village Center, a mecca for antique shoppers. Traveling north leads to the business center of East Hampton and Lake Pocotpaug. Caution is advised on busy roads.

2) CRANSBERRY BOG
 This pond offers benches for resting; the sights of wildflowers and sounds of bullfrogs in the summer, and picturesque ice skating and hockey games in the winter. Cranberry Meadow and Bog was once a natural cranberry producing bog. During the 1920's and 30's, the cranberries were harvested, transported to grocers, and bartered for groceries.

3) RAPALLO VIADUCT
 Built in 1873 (as was its sister, the Lyman Viaduct, 1-1/2 miles east in Colchester), the Rapallo bears the name of a railroad director and was built for two train tracks. Originally a 1,280 ft. long bridge 80 ft. high above Flat Brook, the increasing weight of freight trains necessitated filling underneath it in 1913. The spectacular views of the marsh to the north and other natural surroundings make this a rare treat.

4) COMSTOCK BRIDGE
 The Comstock Bridge was built in 1781 and rebuilt in 1865. It is one of only three remaining covered bridges in Connecticut. The Comstock Bridge links East Hampton and Colchester and is approximately 1-1/4 miles south of the intersection of Colchester's Bull Hill Road and the Air Line Trail. The bridge is open to pedestrian traffic and has a picnic area nearby.

PARKING & TRAIL HEAD
Cranberry Meadow on Smith Street - Handicapped Accessible. A large Air Line Railroad sign highlights the trailhead.

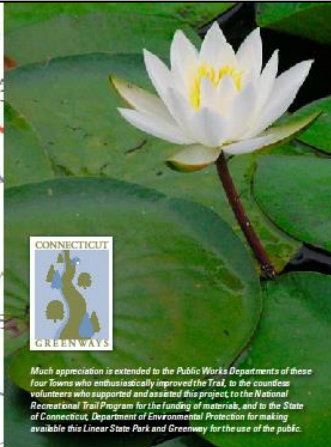
5) LYMAN VIADUCT
 Towering 127 feet high over Dickinson's Creek, this is one of the biggest thrills of the Trail. Built in 1872 and named after David Lyman, the Air Line's first president, the Lyman was once a 1,108 foot long bridge. The increasing weight of freight trains necessitated filling the bridge to the top with gravel in 1912-13 (a culvert allows Dickinson's Creek to flow through).

6) SALMON RIVER STATE FOREST
 This 6,115 acre forest offers miles of hiking, provides several picnic areas, and borders Day Pond State Park. Salmon River is a key river in the D.E.P.'s Atlantic Salmon restoration project, and provides water recreation activities such as fishing and spring kayaking, and has a handicapped accessible fly fishing area.

7) RIVER ROAD BRIDGE
 This 20 foot long brownstone arch bridge was built in 1887 and carried trains 18' above the unpaved section of River Road, which follows the beautiful Salmon River.

8) COLCHESTER STATION, TOWN CENTER & HISTORIC DISTRICT
 At Colchester Railroad's terminus lie the historic station and freight depot that once served passengers and the Hayward Rubber Complex (owned by Nathaniel Hayward, inventor of vulcanized rubber). Turning right (south) onto Lebanon Avenue leads to the Town Center, lovely Town Green, and a wide sampling of historic architecture, recognized in the National Register of Historic Places.

PARKING & TRAIL HEAD
Bull Hill Road - Handicapped Accessible
River Road - Handicapped Accessible and can accommodate Horse Trailers. To reach the Trail, take the path through the woods south of the parking area. Or, take a detour along the unpaved portion of River Rd. following Salmon River to Bull Hill Road and access the Trail a short distance north.



CONNECTICUT
GREENWAYS

Much appreciation is extended to the Public Works Departments of these four Towns who enthusiastically improved the Trail, to the countless volunteers who supported and assisted this project, to the National Recreational Trail Program for the funding of materials, and to the State of Connecticut, Department of Environmental Protection for making available this Linear State Park and Greenway for the use of the public.

FOR MORE INFORMATION
 CT DEP - www.ct.gov/dep
 East Hampton Parks & Recreation - (860) 267-6020
 Colchester Parks & Recreation - (860) 537-7297
 Hebron Parks & Recreation - (860) 228-5871 x120
 Lebanon Town Hall - (860) 642-6100

Lebanon Parks & Recreation
East Hampton Parks & Recreation
Colchester Parks & Recreation
Hebron Parks & Recreation
Salmon River State Park

Photos by Stan Malcoln: www.performance-waion.com/airline

Guide & Map for the Towns of East Hampton, Colchester, Hebron and Lebanon

The Air Line Trail – The Future Looks Bright!

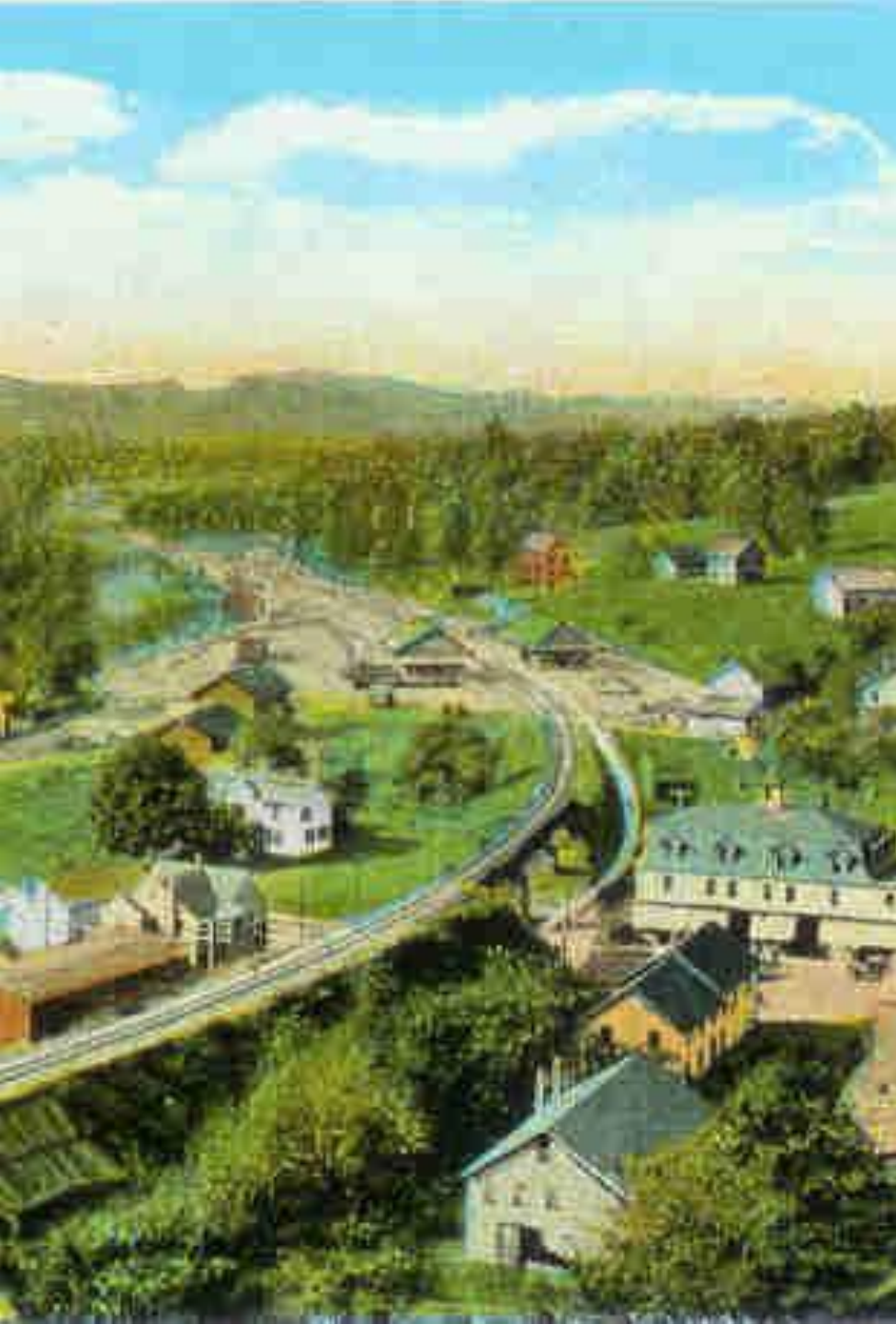
Nationally:

- ❑ KATY Trail State Park in Missouri
- ❑ Erie Canal show booklet

In Connecticut:

Farmington Canal Heritage Trail –bike patrol, breweries, restaurants, amenities





Master Plan Goal

Re-establish Air Line Trail's Economic Significance & Value

Historic Town Center Connections

The Air Line Railroad not only increased the volume and speed of sending commodity, farm products and other freight to market, but also encouraged personal travel. The railroad provided transportation to the cities as well as better mail service and transport for children who boarded the train to attend high school in Willimantic.

During the summer months, the railroad brought a huge influx of city people to the country for vacations. Many local farm families boarded these summer visitors for the extra income. The railway made possible the start of the resort business still flourishing on Williams Pond.

GOALS OF THE MASTER PLAN

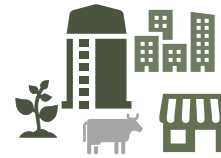


Inventory of Adjacent Town Land Use, Planning, Economic Strategies
Develop Regional Collaboration Options Based on Best Practices



Wayfinding to Off Trail Towns, Tourist Amenities & Connections to other trail systems

What can trail users find off the trail in adjacent towns?



Strategies for Town Economic Development to Educate and Create New Small Recreational Supportive Business



Explore and Develop Framework for Continued Twelve Town Air Line Trail Collaborative

Fundraising, Calendars, Events, Marketing, Etc.



Regional Share Service Options and Efficiencies for Collaborative Maintenance and Improvements to Trail, Parking Areas and Amenities



Natural Resource Inventory to Highlight and Map Critical Areas for Maintenance Concerns, Infrastructure Installation as well as Promoting Eco-Tourism and Education

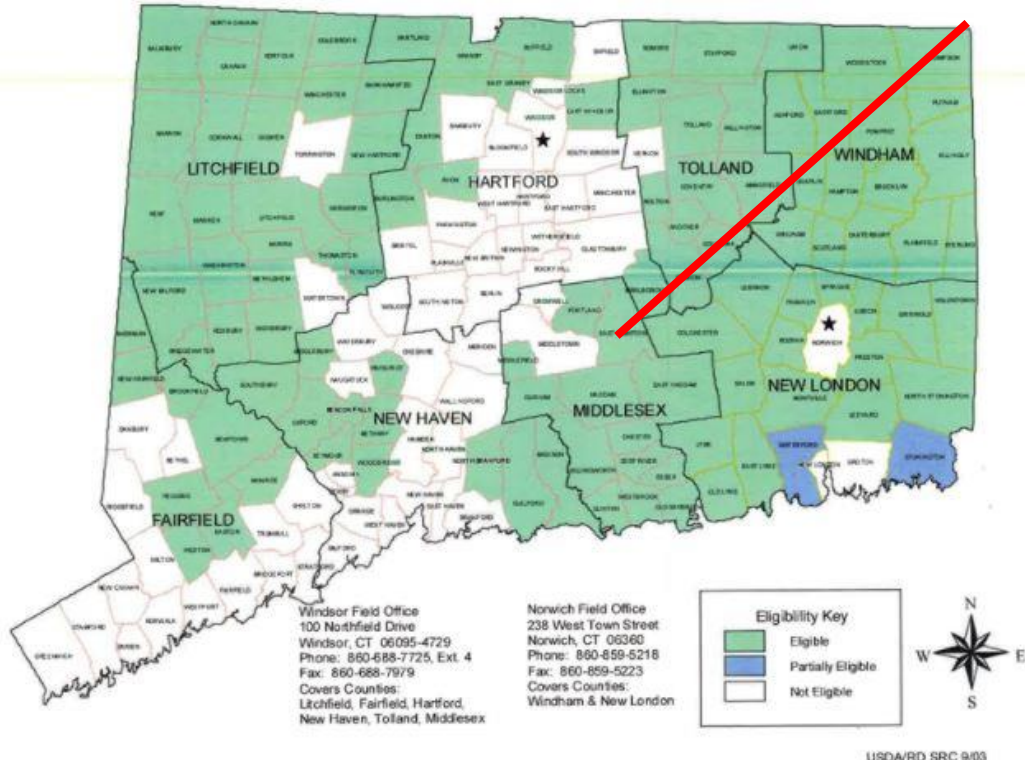


Enhanced Marketing and Branding to Include Town Amenities, Air Line Trail Events and Trail Information
New Website with Links to CTDEEP and Planning for Cell Phone Based Apps



Coordinate Regulatory and Design Objectives for Adjacent Land Use to Protect Scenic Integrity of the Corridor

Connecticut (MA/CT/RI Jurisdiction)
Rural Development Eligible Areas For Housing Programs



LOCATION CRITERIA

AIR LINE TRAIL CONTEXT FOR RURAL PROSPERITY

- Collaboration Leverages Rural Location for USDA Municipal Eligibility for Community Infrastructure
- Airline Trail Corridor Traverses Last Green Valley
- Village Center Connections and Opportunity
- Promotes Grassroots Business Creativity
 - Hospitality
 - Local Food and Farms
 - Recreational Tourism Business
 - Environmental Educational
- Promotes Lifestyle to Attract New Business – Work From Home Residents

“Rural areas have unique assets which can create social and economic opportunity, like affordable real estate and cost of living, acreage for expansive industries, strong communities, and hard-working people.” – Center on Rural Innovation

Twelve Town Committee & Task Force Structure

MASTER PLAN PROJECT COMMITTEE

1-2 Representatives From Each Town

ECONOMIC TASK GROUP: 10 Representative
Stakeholders from business, commerce, non-profits

MAINTENANCE AND INFRASTRUCTURE DESIGN

TASK GROUP: 1-2 Representatives From Each Town Public Works
and Planning Staff & CTDEEP Representatives

ENVIRONMENTAL TASK GROUP: 10 -12 Representative
stakeholders from conservation and environmental organizations
and CTDEEP Representatives

TWELVE TOWN ALL STAR TEAM

Representatives
Who Gathered on
September 13th to
Discuss Possibilities
and Met with
Property Owner –
CTDEEP on
September 26th

Windham Jim Bellano

Windham Li Yukshan

Windham Jim Rivers

Putnam Delpha Very

Portland Mary Dickerson

Pomfret
Maureen Nicholson

Pomfret Charlie Tracy

Pomfret Nick Gardner

Lebanon Phil Chester

Lebanon Donna Koenig

Lebanon Jay Tuttle

Hebron Rich Calarco

Hebron Brian O'Connell

Hebron Mike O'Leary

Hebron John Guskowski

Hampton
John Guskowski

Hampton Allan Cahill

Hampton J. Arriola

East Hampton
Jeremy DeCarli

East Haddam Rob Smith

Colchester Randall Benson

Colchester Jay Gigliotti

Chaplin Jay Gigliotti

CME Associates
Mike D'Amato

Salmon River WaterShed
Pat Young

Portland Ashley
Majorowski

Columbia Mark Walter

Columbia Paula Stahl

Thompson Chris Elkinson

Thompson Ken Beausoleil

Staff Support

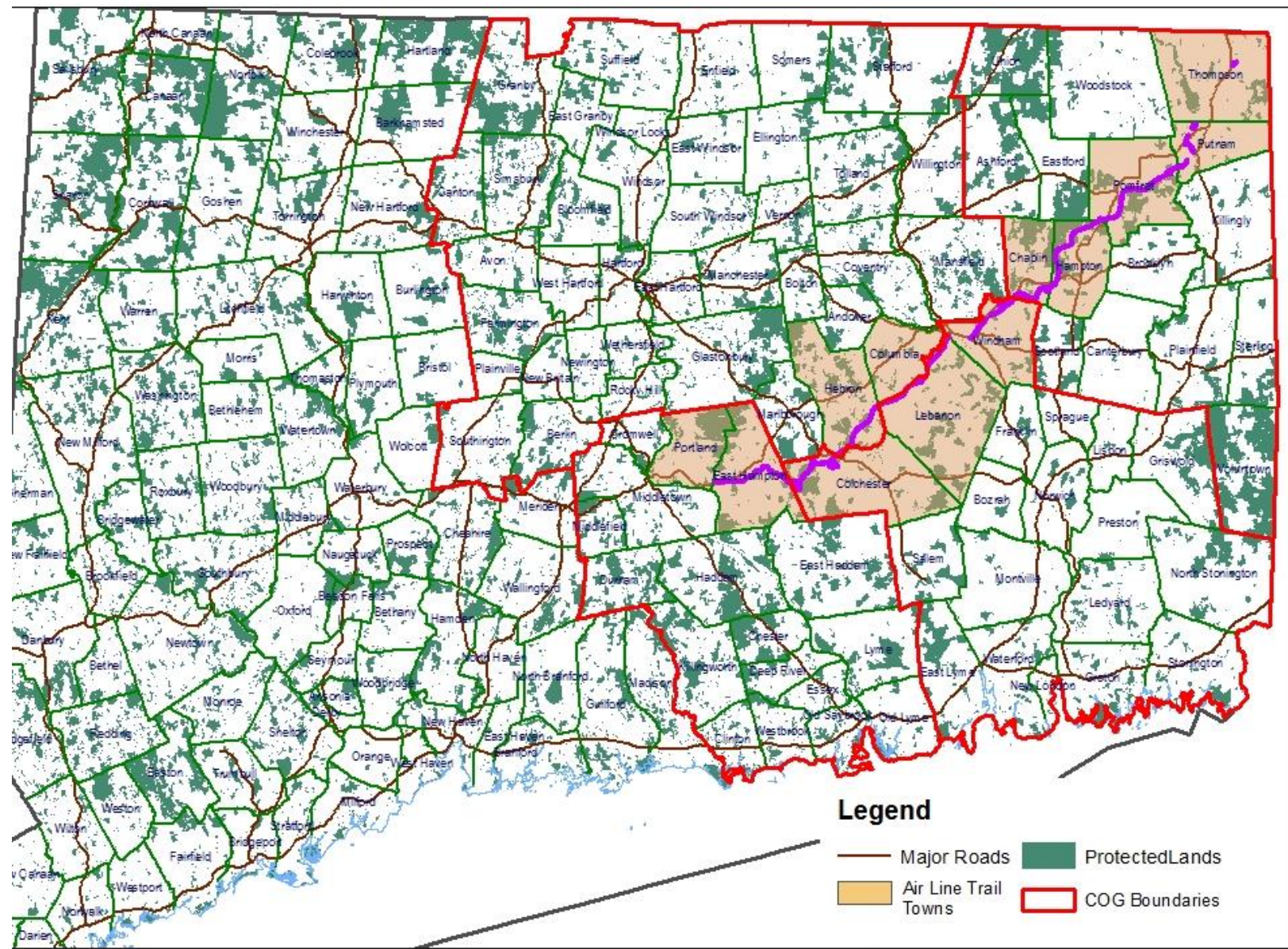
CTDEEP – Laurie Giannotti

CTRC&D – Jeanne Davies

GEOGRAPHY

Project Stakeholders Implementation:

- Twelve ALSPT Towns
 - Conservation Commissions
 - Trails Committees
 - Public Works
 - Planning and Land Use Departments
 - Economic Development Commissions
- Two Conservation Districts
- Numerous Regional Land Trusts
- Three Transit Districts
- Four Councils of Governments
- Three CT Workforce Development Areas
- Numerous State Parks, Forests, Land Trust Lands, Town Open Space, Municipal Parks
- One CTDOT Highway District
- CTDOT Bike Ped Coordination
- East Coast Greenway
- Salmon River Watershed
- The Last Green Valley



Town Air Line State Park Trail Master Plan- Project Geography



Attachment C

Map Produced by CTC&D 10/2018 - LJD

Focus of Business Development for Village Center

Manufacturing Past

- Area in decline from 1970s

Resurgence of small locally owned businesses

- Bike Shop
- Coffee Shop
- Restaurant
- Bakery



**EXAMPLE OF TRAILSIDE
GRASS ROOTS BUSINESS OPPORTUNITY
Hebron, Connecticut – Route 85**



About Us

Cutting edge meets old school

Your Local Bike Shop

AirLine Cycles is the classic small town America bike shop, where cutting edge technology meets old school community. Whether you are looking for the latest in Di2 electronic shifting or clutch derailleurs for better chain retention, or searching high and low for a retro shifter to complete your vintage mountain bike restoration, AirLine Cycles has the expertise you are looking for!



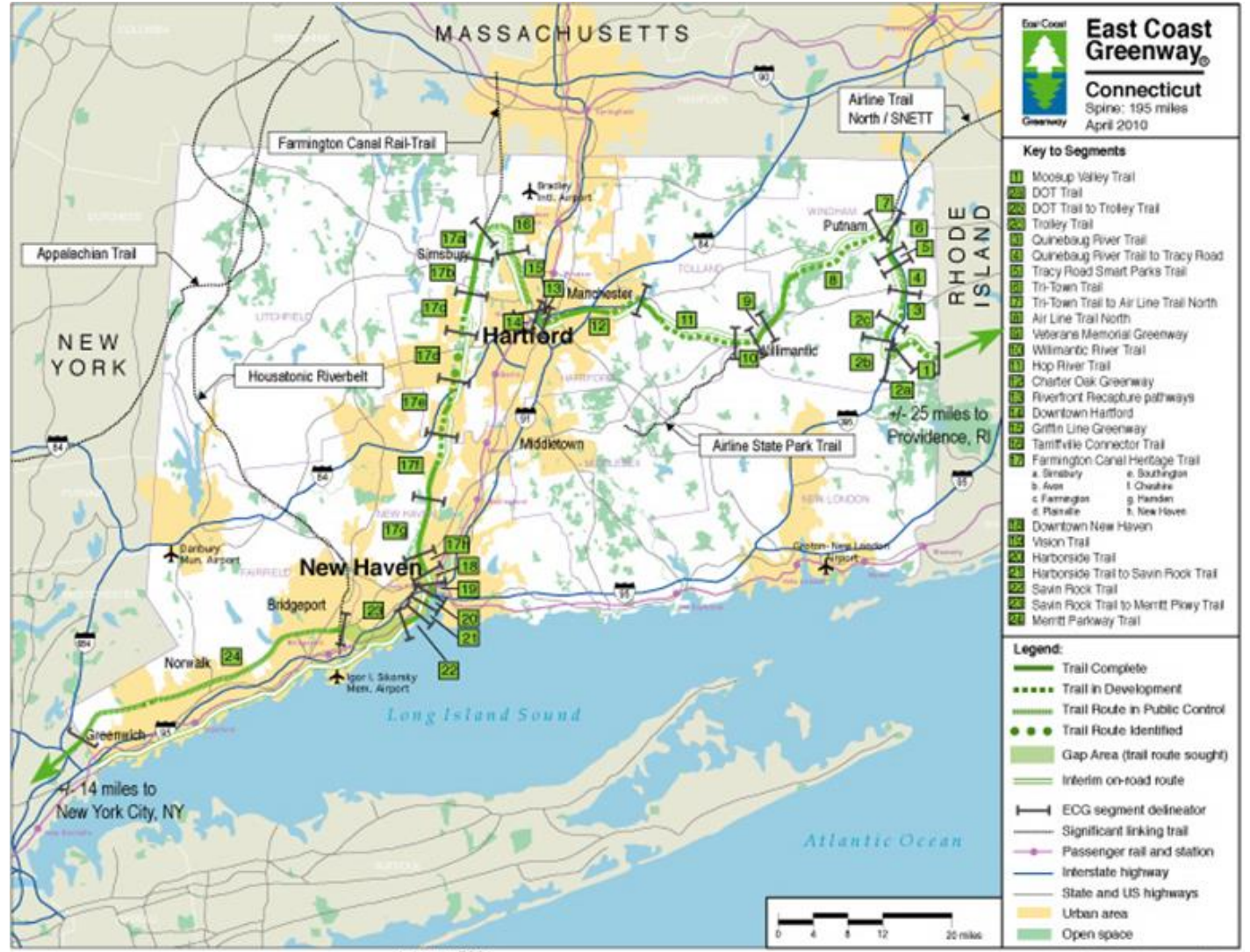


REGIONAL CONTEXT

Existing and Future Statewide Links

- East Coast Greenway Trail
- Hop River Trail
- Farmington Canal Trail
- Colchester Link
- Goodwin Trail (Future)
- Central CT Planned Loop Trail

Massachusetts –Quinebaug Park & River Trail, the Tri-State Marker Loop and more.





Search the Map



75 362 137 839 Degrees

2000km





THE GREAT TRAIL

DEEPLY CONNECTED

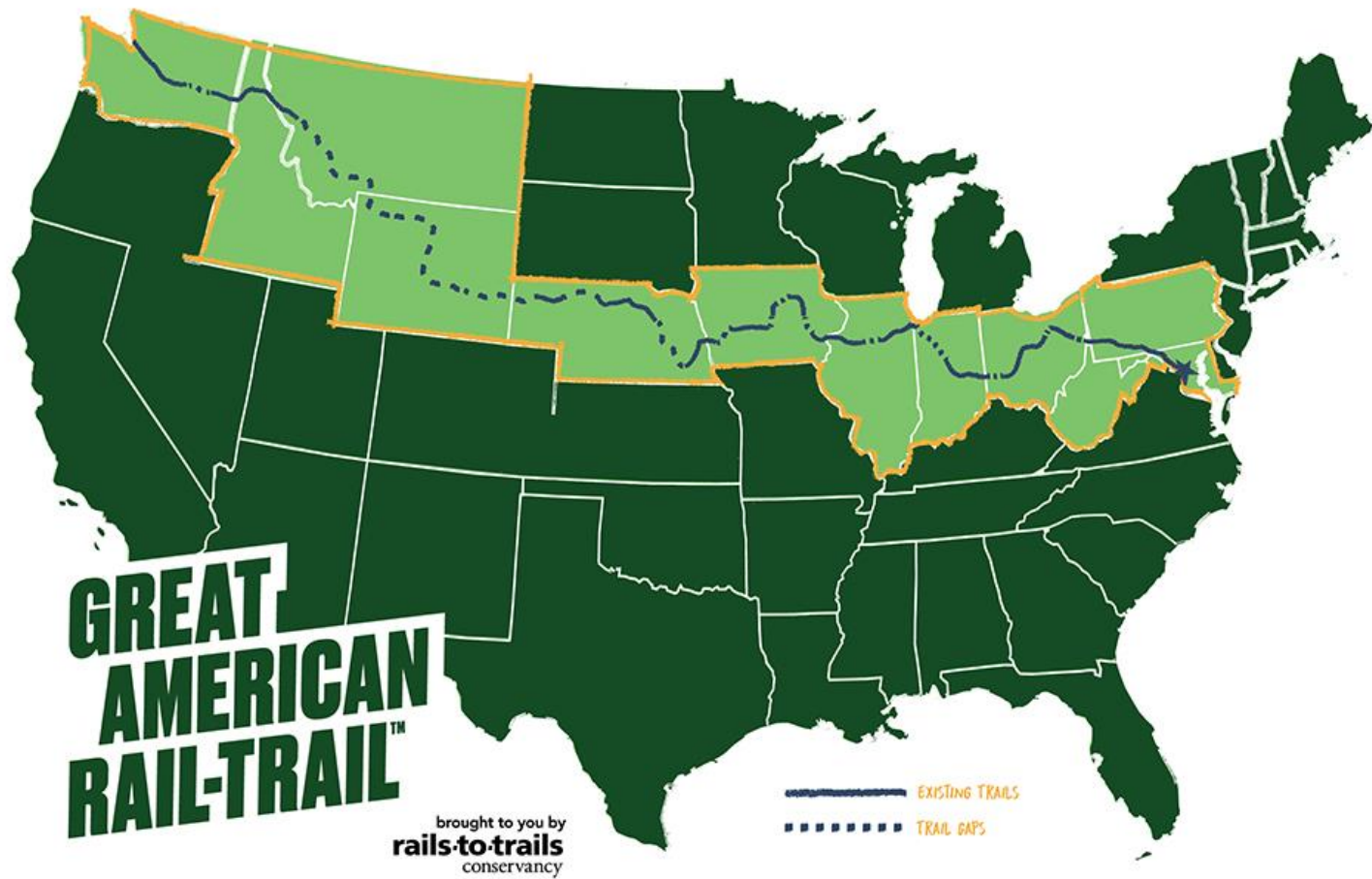
We all have a connection to the Trail

FIND YOURS

[Explore the Map](#) [Stories](#) [Give](#)

Keep exploring
▼





Picture yourself ... pedaling across the entire country on a safe, seamless and scenic pathway—or walking a local trail that connects along historic routes. Imagine the incomparable experience of exploring America's heritage by trail—its potential, its beauty and bounty, its people and places. Consider the economic opportunities and the benefits for communities along the route of a multiuse trail that stretches more than 3,700 miles between Washington, D.C., and Washington State.



RIDE MORE.

WORRY LESS.

JOIN US ON THE AIR LINE TRAIL

MASTER PLAN COMMITTEE KICK OFF MEETING – LATE AUGUST –EARLY SEPTEMBER 2019